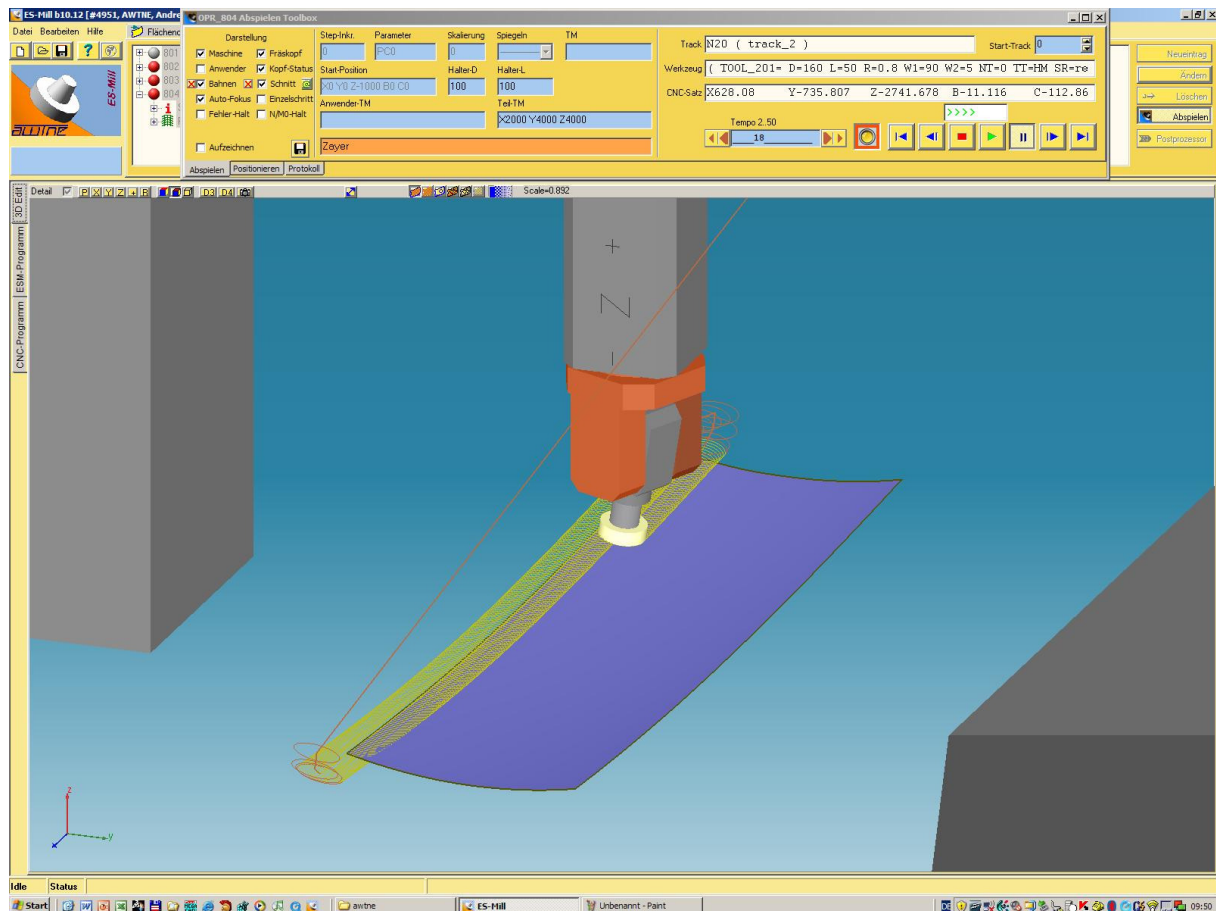


Replayer



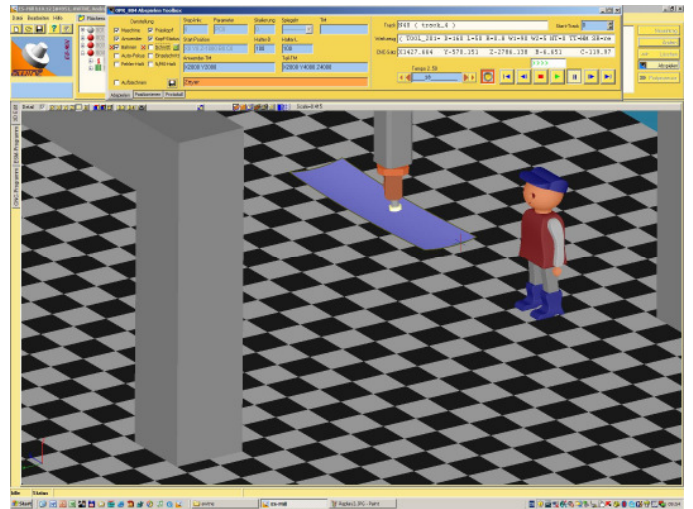
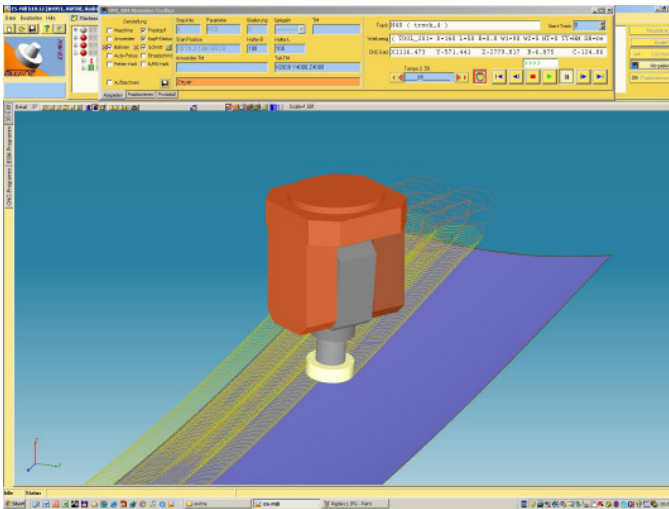
The Replayer simulates the CNC lines on the basis of a generated NC programme, the surface data and a graphic representation of the machine and the tool.

A computerised comparison of the tool cut with the workpiece (metal removal simulation) does not take place. The possible movement limits of the machine in the relevant axis are controlled and a warning/error is given if a violation occurs.

Information about the structure (kinematics) and the machine dimensions must be created in form of an individual Replayer file similar to those of a post processor.

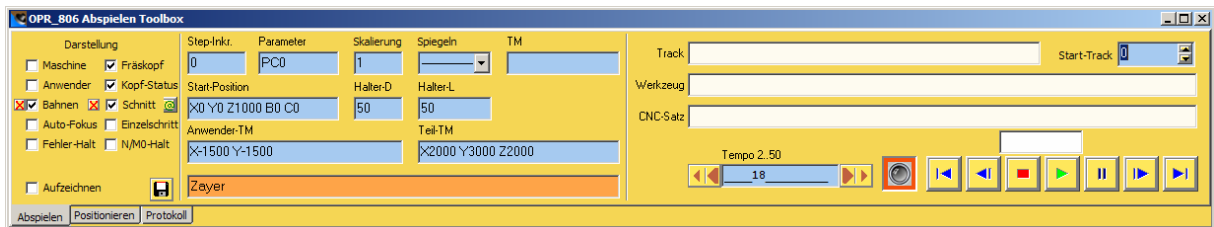
The tool/workpiece movements are shown as line and/or circle sections. Rapid traverse and feed paths are distinctively coloured. Single step, high-speed/reverse steps and re-entry point targets are selectable.

The settings for workpiece transformations, rotations, mirroring and scaling correspond with key-ins in the post processor menu.



Various components for a scene can be selected or deselected:

- show only tool
- show only tool and head
- show complete machine
- show machine with user
- "tool-ride along" (autofocus) or fixed view point
- show with/without workpiece



In addition to simulation of a generated NC programme the machine can also be moved manually. The valid traverse paths are also monitored in this mode.

